



GMT MONTHLY MEMBERSHIP PROGRESS REPORT

Results as of: 5/31/2018

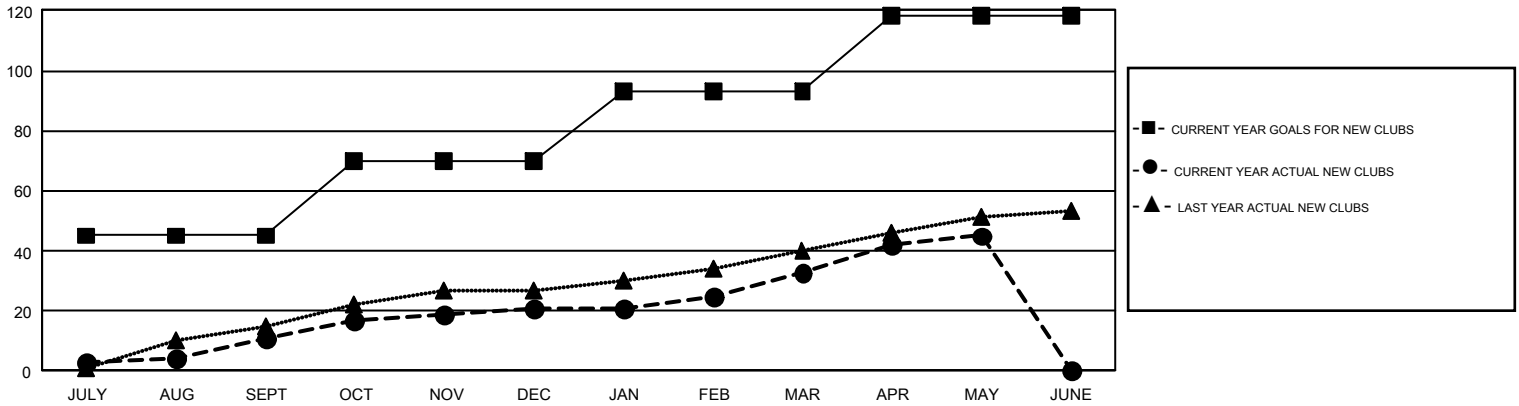
GMT Constitutional Area 7, Group C

GMT: EVELINE CHANDRA

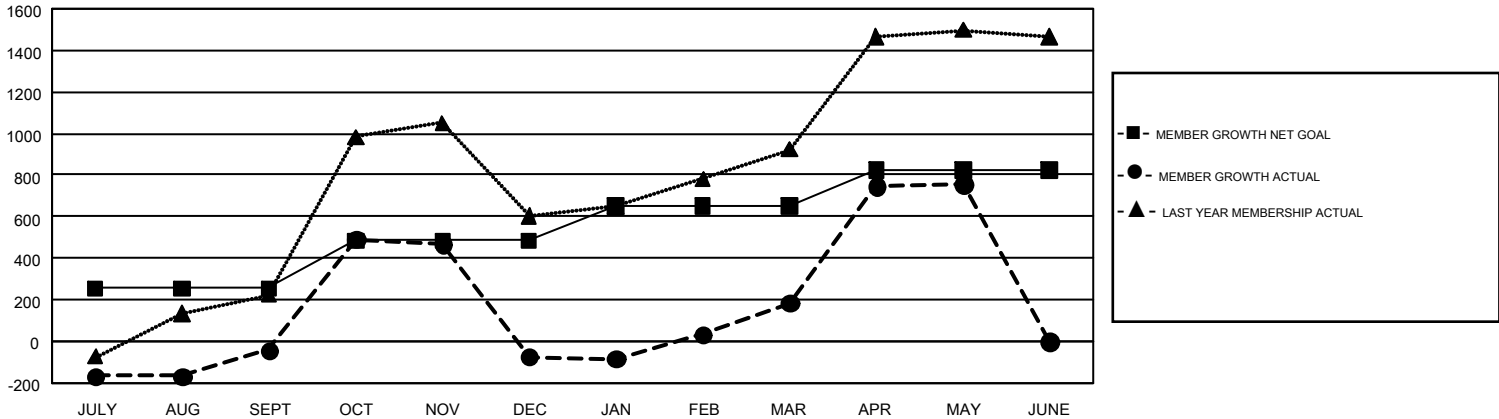
REPORT DOES NOT INCLUDE CLUBS IN UNDISTRICTED AREAS.

Clubs				Members			
RESULTS FOR 2017-2018				RESULTS FOR 2017-2018			
QUARTER	NEW CLUB GOAL	NEW CLUBS	DROPPED CLUBS	QUARTER	MEMBER GROWTH NET GOAL	MEMBER GROWTH ACTUAL	DROPPED MEMBERS ACTUAL (including transfers)
JULY/AUG/SEPT	45	11	5	JULY/AUG/SEPT	255	599	590
OCT/NOV/DEC	25	10	5	OCT/NOV/DEC	230	857	826
JAN/FEB/MAR	23	12	3	JAN/FEB/MAR	165	616	319
APR/MAY/JUNE	25	12	0	APR/MAY/JUNE	175	855	264

GOALS AND ACTUAL NEW CLUBS CUMULATIVE



GOALS AND ACTUAL MEMBERS CUMULATIVE



DROPPED CLUBS: 13	270 CLUBS OF 374 ADDED 1 OR MORE NEW MEMBERS	<u>GENDER DISTRIBUTION</u> MALE 4,819 (44.57%) FEMALE 5,992 (55.43%)
<u>DROPPED MEMBERS</u> DECEASED 21 CLUB CANCELLED 31 OTHER 1,947 <hr/> TOTAL 1,999	CLICK HERE FOR CUMULATIVE MEMBERSHIP DATA	TOTAL FAMILY UNIT MEMBERS 2,255 FAMILY MEMBERS PAYING HALF DUES 1,233